

Unit 6 Bellenden Road Business Park
London SE15 4RF
<https://www.biblioteka.website>

Open Thursdays and Saturdays 10am - 6pm
and by appointment, please contact exhibitions@biblioteka.website

LAVA LINES

(21 October - 27 November 2022)

With Juliette Lizotte, Francisca Khamis, Naïmé Perrette,
Camille Picquot, Rachel Pimm, Mika Oki, Riar Rizaldi, Chooc Ly Tan,
Adán Ruiz, Ana Vaz and Rieko Whitfield.

Exhibition

Francisca Khamis, Naïmé Perrette,
Camille Picquot, Rachel Pimm, Mika Oki, Riar Rizaldi

Opening event

21 October, 7pm to 12am

With performances by Chooc Ly Tan, Mika Oki, Rieko Whitfield

Closing event

27 November, 7pm to 10pm

With a reading by Francisca Khamis
and films by Adán Ruiz and Ana Vaz

Workshops

23 October, 26 and 27 November, 2pm to 6pm

World building and Live Action Role Play by Juliette Lizotte

Radio by Arif Kornweitz

Publication by Folium Publishing

Set design by Leïla Arenou

Curated by Leïla Arenou and Naïmé Perrette

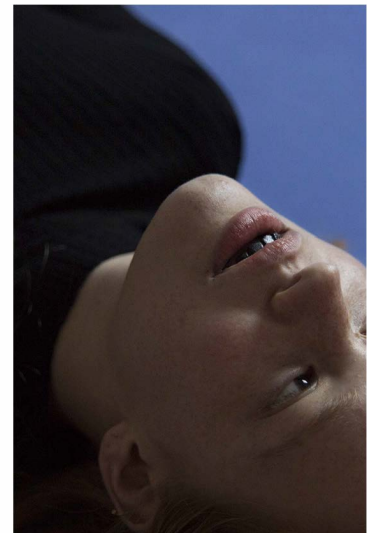


Image: Camille Picquot

Supported by Arts Council England, Creative Industries Fund NL,
the Embassy of the Netherlands and Fluxus Art Projects



**creative
industries
fund NL**



Supported using public funding by
**ARTS COUNCIL
ENGLAND**



Kingdom of the Netherlands

BIBLIOTEKA

Unit 6 Bellenden Road Business Park
London SE15 4RF
<https://www.biblioteka.website>

Open Thursdays and Saturdays 10am - 6pm
and by appointment, please contact exhibitions@biblioteka.website

Portals to an underworld of almost limitless energy production, volcanic environments are also the site of ancestral practices related to land preservation movements. The works of the artists in this exhibition delve into the volcano's imaginary to touch on collective memory, non-human agency and myth-making.

Volcanic lands are considered one of the world's largest intact ecosystems. Shifting grounds of sulfur fumes, acid ponds, and salt deserts are the only visible parts of the Earth's secret inner movements: a new language is needed to comprehend the turbulent surface. In these lands, extreme states of existence come into being. Invisible organisms acclimated to extreme conditions spark research on the origins of life on earth. Micro-histories of adaptation and resilience dwell in the stones, echoing our earthly survival.

These extreme landscapes are considered a place of lifelessness, a land to excavate, with the aim of extracting the non-living mineral wealth that makes life bloom elsewhere. Investment in geothermal power is expanding rapidly, generating new geopolitical and land appropriation issues. Modern scientific approaches have long sought a disembodied, subject-object relationship to the earth, erasing the relationship between land and culture.

But the earth retains a power beyond that of human understanding. In an age dominated by eco-anxiety, the figure of the volcano allows us to explore the questions surrounding the prediction of natural disasters, between scientific standpoints and ancestral rituals. Old and new geological upheavals make visible the complex entanglement of life and death that surrounds us and open up reflections on our earthly interdependence.

Lava Lines leans into these shifting geographies - breaches, ruptures, manifestations - to acknowledge the sensitive entanglement of subterranean physics, and our difficulty to comprehend and therefore represent these complex ecologies and times.